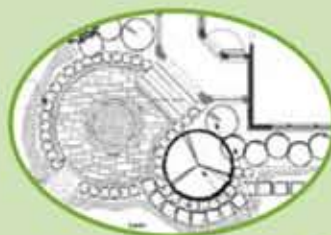


How To Avoid Expensive Landscape Design Mistakes

Start with a Plan

Consider all the elements needed in your outdoor space. Avoid selecting the wrong plants and materials. Take time to plan your landscape.



Cad Renderings

These types of plans are usually executed by trained designers. They allow for great accuracy, detail and provides all the necessary information to install your landscape.



Digital Imaging

Provides a very visual experience. Works well if you are unfamiliar with plant material. Apps are available but trained designers can provide a more sophisticated rendering.



Sketch it Out

Use graph paper to sketch your ideas. Establish a scale to ensure proper placement and size. Informal but effective.

According to BobVila.com, the biggest landscaping mistake that homeowners make is not having a coherent plan.

Landscape Design

Follow these key components when designing your landscape.



Plant Selection

Research plant material before purchasing. Consider, Growth Rate - Climate Zone - Light Requirements - Shape and Texture.



Color

Download a color wheel. Establish a color scheme for your garden. Reds, oranges and yellows provide a warm, vibrant feel. Cool colors such as pink, blues, purples provide a calming feel.



Plant Placement

Read the labels on your plants. Don't plant based on their purchase size. Ensure your taller plants are installed behind smaller plants.

The American Society of Landscape Architects (ASLA) recommends that homeowners invest 10 percent of the home's value in landscaping.

A PROPERLY PLACED TREE CAN CUT YOUR COOLING COSTS BY AS MUCH AS 40%



Hardscapes

When planning your walkways, patios, driveways, etc., consider all the options available. Paving Stones - Natural Stone - Clay Brick - Cement. Each product is priced differently and will lend itself to a particular feel.

Good landscaping can add up to 28% to overall home value, says landscape economist John Harris. Even taking your landscaping from "good" to "excellent," in terms of design, condition, and placement, can add 6% to 7% to a home's value, according to a Clemson University study.

Maintenance

Protect your investment. Your plants and lawn require routine maintenance after installation.



Fertilizer and Pesticides

Grass, plants and trees need nourishment. Establish a program for fertilizing your entire landscape. Prevent and treat pests as they come.

Turf

Install sod or seed best suited to your climate. Your grass should be mowed every 7-10 days to a desired height of 2-3 inches. Always maintain sharp blades.

Tree and Shrub Pruning

It is vital to the health and vitality of your shrubs that they are pruned regularly. This will help prevent physical damage as well as damage from pests and disease.

A landscape full of large, mature plants is obviously one that has been carefully tended to over the years, and that sends a signal to buyers. According to real estate agent Tony Giacalone, in the "Boston Globe," "that's a good indication that they've taken care of the inside of the house as well."



LandscaperLongIsland.com